

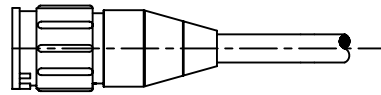
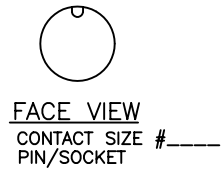
PART NUMBER:

QUOTATION/SAMPLE DRAWING

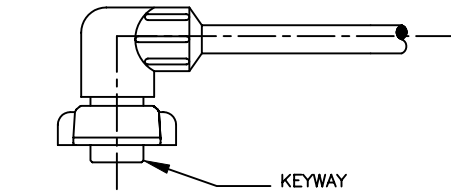
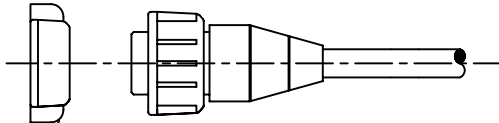
NOTES & SPECIFICATIONS:

1. CABLE TO BE COILED/BUNDLED.
2. CUSTOMER PART NO.: \_\_\_\_\_ REV. \_\_\_\_\_

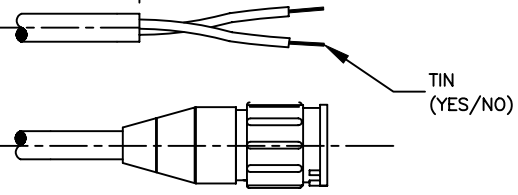
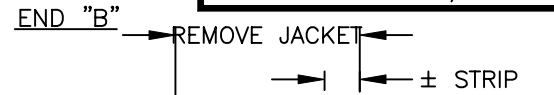
END "A"



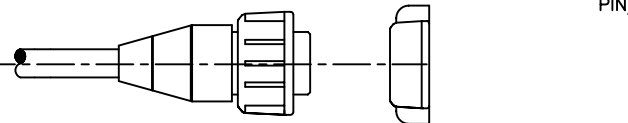
STRAIGHT OVERMOLD  
NO O-RING



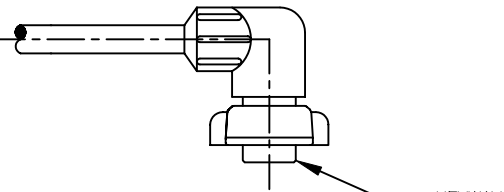
RIGHT ANGLE OVERMOLD



STRAIGHT OVERMOLD  
NO O-RING

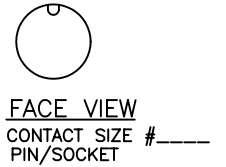


STRAIGHT OVERMOLD



RIGHT ANGLE OVERMOLD

CUT BLUNT



MEGA-CON-X  
MAXI-CON-X  
MINI-CON-X  
MULTI-CON-X  
MICRO-CON-X

CABLE INFORMATION	
PART NO.:	
CABLE O.D.:	
JKT COLOR:	
JKT MATERIAL:	
STRANDING:	
NO. COND.:	
COND. INSUL.:	
TINNED:	
SHIELD	
GAUGE:	
OTHER:	

WIRE COLOR CODE END "A"

PIN #1	PIN #2	PIN #3	PIN #4	PIN #5	PIN #6	PIN #7	PIN #8	PIN #9	PIN #10
PIN #11	PIN #12	PIN #13	PIN #14	PIN #15	PIN #16	PIN #17	PIN #18	PIN #19	PIN #20

WIRE COLOR CODE END "B"

PIN #1	PIN #2	PIN #3	PIN #4	PIN #5	PIN #6	PIN #7	PIN #8	PIN #9	PIN #10
PIN #11	PIN #12	PIN #13	PIN #14	PIN #15	PIN #16	PIN #17	PIN #18	PIN #19	PIN #20

DO NOT SCALE PRINT		REV.	DATE	DESCRIPTION	INIT.
NOTICE - All information illustrated or revealed on this document is proprietary, and is the exclusive property of the CONXALL CORPORATION. Unauthorized duplication or distribution of the information contained in this document is prohibited.		DRAWN BY: DATE: 8/10/94		601 E. WILDWOOD VILLA PARK, IL 60181	
		CHECKED BY:			
UNLESS OTHERWISE SPECIFIED ALL UNITS ARE IN FEET, INCHES, AND FRACTIONS OF INCHES.		APPROVED BY:		TITLE: MEGA-CON-X MAXI-CON-X MINI-CON-X MULTI-CON-X MICRO-CON-X	
		SCALE: NTS	SIZE: A	SHEET: 1 OF 1	CUSTOMER:
		FILE: QUOTE10	DISK:	REV.:	