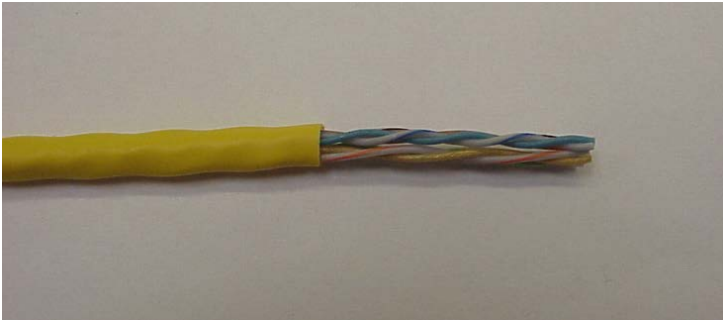


Switchcraft RJ45 IDC Termination Guide

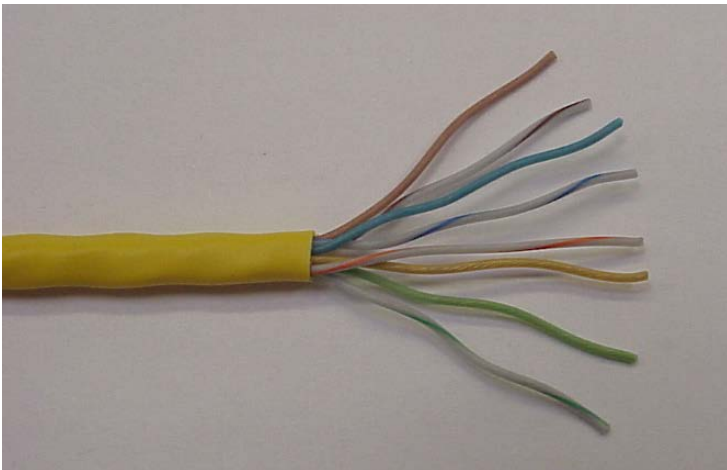
Step 1

Strip cable jacket approximately 1 ¼ inches [31.75mm].



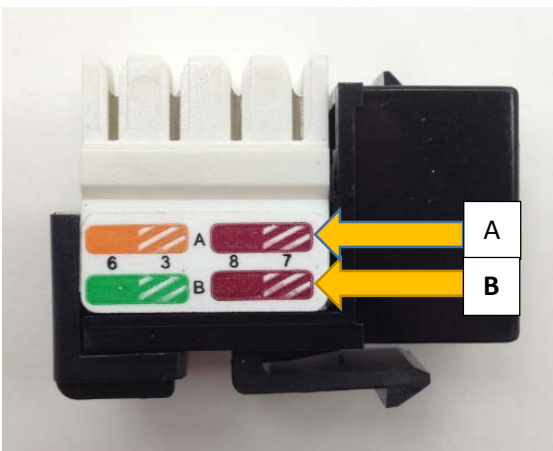
Step 2

Separate the twisted wire pairs from each other. Straighten the wire ends as much as possible.



Step 3

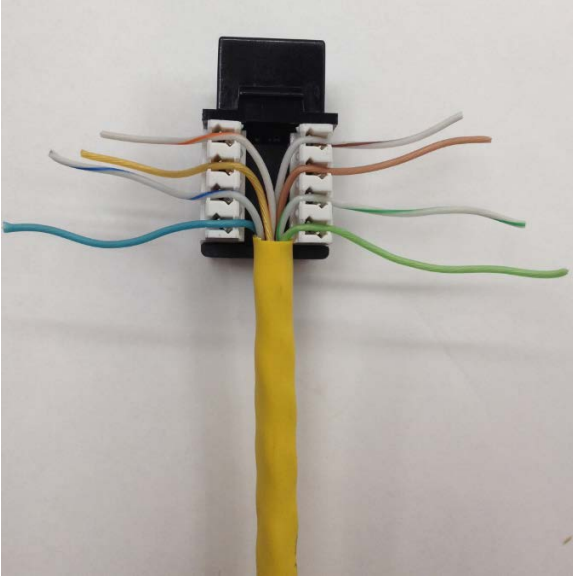
Select which configuration you are wiring the connector to. (Typically T568 B is used.) Each row has it's own color code.



IDC Terminal		T568 A Pair/Wire Color		T568 B Pair/Wire Color
Pin 5	1	White/Blue	1	White/Blue
Pin 4		Blue		Blue
Pin 1	3	White/Green	2	White/Orange
Pin 2		Green		Orange
Pin 3	2	White/Orange	3	White/Green
Pin 6		Orange		Green
Pin 7	4	White/Brown	4	White/Brown
Pin 8		Brown		Brown

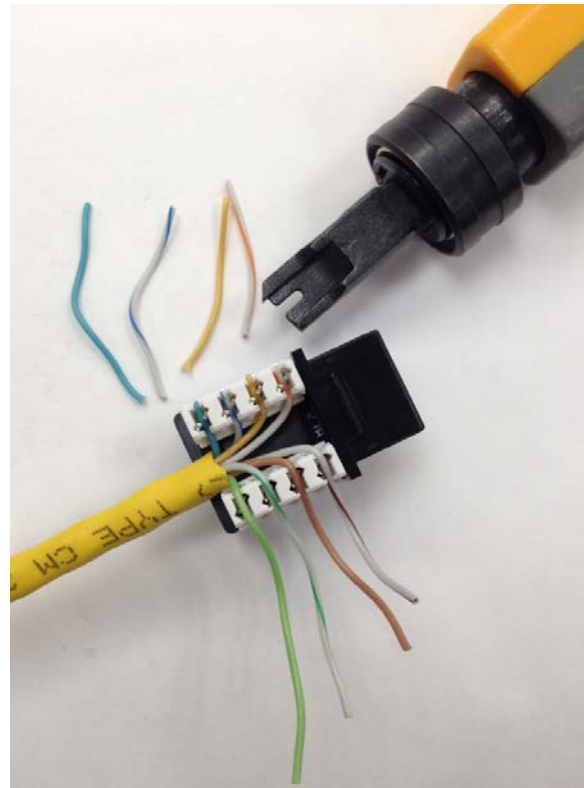
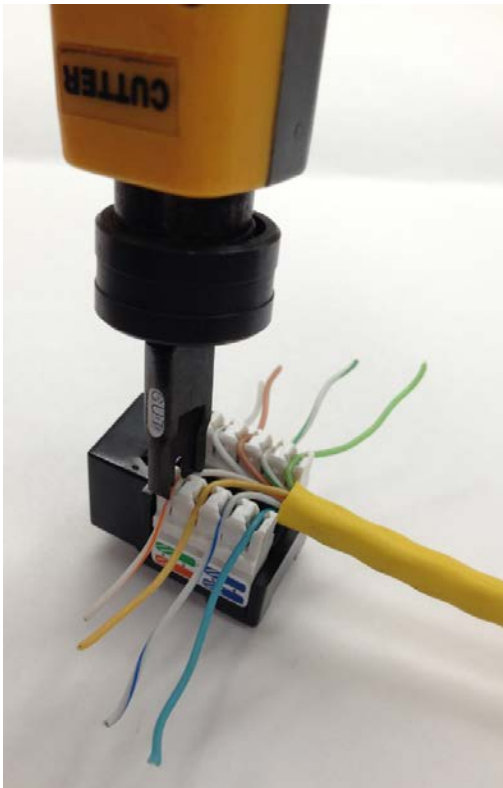
Step 4

Follow the direction on the color-coding sticker to position the wiring in their correct slots. Press them as far down into the termination slots as they will go. Excess wire will extend out of the sides of the jack.



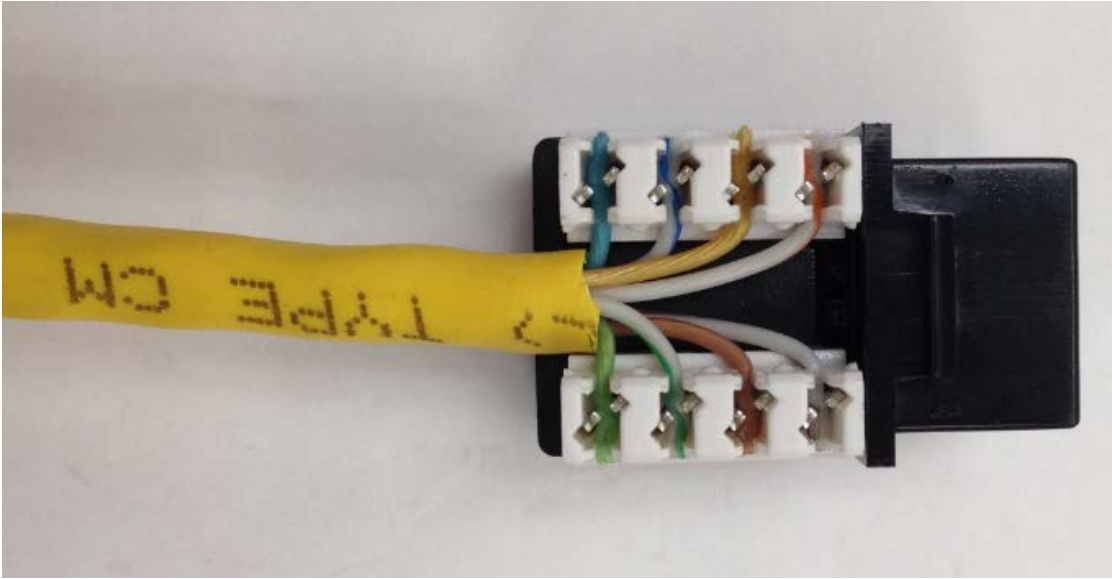
Step 5

The jack assembly must be resting on a flat sturdy surface. Use a punchdown tool to press and cut off each conductor. (Make sure that the punchdown tool's "Cut" side is aligned with the outer edge of the jack.) The punchdown tool terminates and cuts in one step. (Krone 110 Tool was used.)



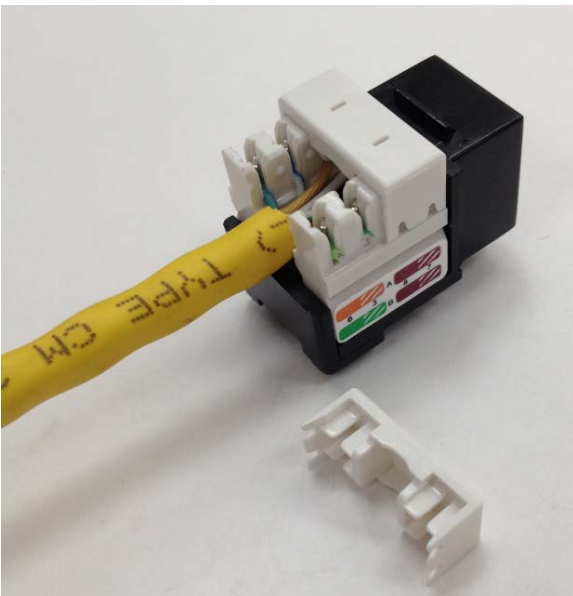
Step 6

Check the quality of the punches. Each wire should be firmly anchored at the bottom of the slot. The jack assembly is now ready for the IDC covers.



Step 7

Snap the IDC covers onto the jack assembly.



Step 8

The RJ45 Connector is now ready to be snapped into the Switchcraft Housing.

